

LU04.S07 - ERD: Reengineering of an existing database

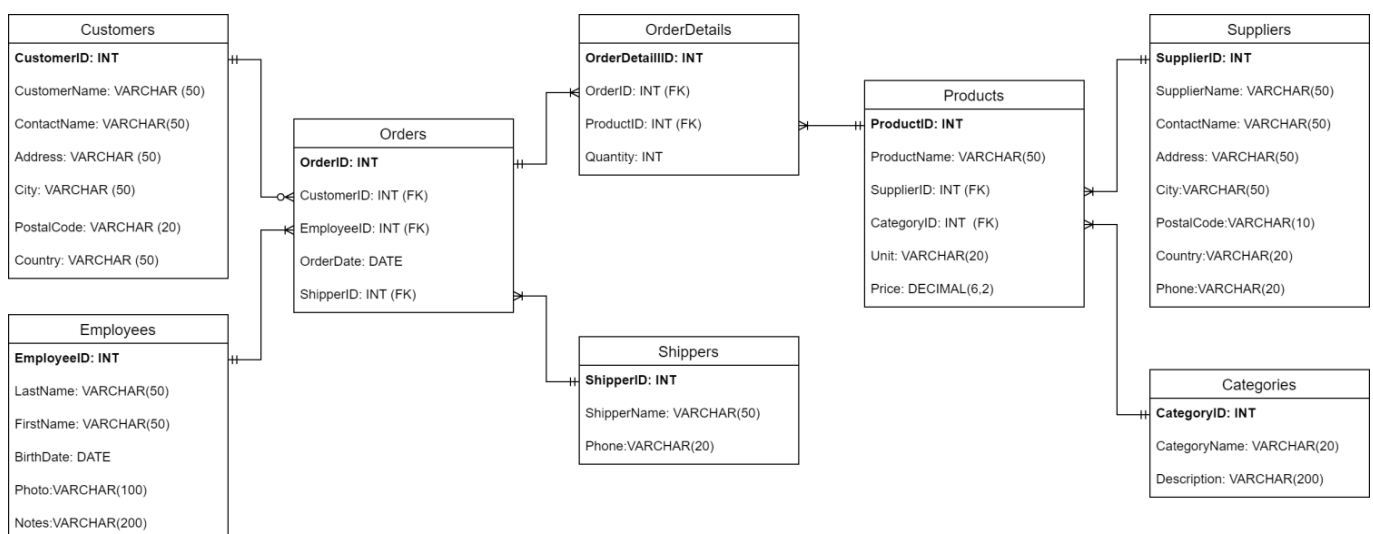
Task

Go to the W3Schools-Website, to the SQL-Editor, and analyze the existing data-structure. Create furthermore an ERD, that describes the existing data-structure in the Crow's Foot Notation.

Suggested approach

- We beginn the diagramm by identifying the entities. these are tables without any foreign keys:
 - Customers
 - Categories
 - Employees
 - Shippers
 - Suppliers
- Then we determine the attributes and the data-types of each entity (-table).
- We continue with the analysis of the relations. These are tables, which have foreign keys in their attribute list.
 - Orders
 - OrderDetails
 - Products
- Finally, we connect the tables with each other in the right fashion and determine the cardinalities (1:1, 1:n, n:m)

Solution



Vocabulary

| English | German |
|--------------------|-------------------------|
| prerequisite | Grundvoraussetzung |
| given | gegebene, vorausgesetzt |
| to determine | bestimmen |
| suggested approach | Vorgehensvorschlag |



Volkan Demir

From:

<https://wiki.bzz.ch/> - **BZZ - Modulwiki**

Permanent link:

<https://wiki.bzz.ch/en/modul/m290/learningunits/lu03/loesungen/l07>

Last update: **2024/10/17 13:27**

