

LU03.A05 - ERD: SchoolGrades DB

After developing our conceptual data model, the next step to establish a physical data base is shape a ERD, the Entity Relationship Diagram.

Prerequisites

- Work type: Peer
- Means of aid: only teaching materials, no use of ai.
- Timeframe: 15 Minutes
- Expected result: A Word/PDF file with an ERD that visualises the given business case.

Task

Create an ERD to the given ERM in the Crow's Foot Notation.

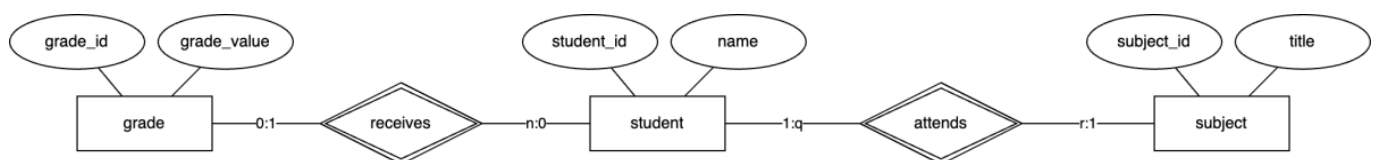
- Identify additional attributes
- Establish relation with inkl. the primary keys and foreign keys
- Connect the tables and finish your work by fixing the entities (0:1, :1, 0:n)

Given Details

1. Relationships:

- 0-to-1:
 - A student have 0 to at the most 1 grade in each subject.
- 0-to-many
 - A subject can be attended by many students.

2. ERM visualisation



Solution

[Lösung](#)

Vocabulary

English	German
prerequisite	Grundvoraussetzung
given	gegebene, vorausgesetzt



Volkan Demir

From:

<https://wiki.bzz.ch/> - **BZZ - Modulwiki**

Permanent link:

https://wiki.bzz.ch/modul/m290/learningunits/lu03/aufgaben/a05_erd?rev=1726124284

Last update: **2024/09/12 08:58**

