

LU03.A04 - ERD: Travel DB

After developing our conceptual data model, the next step to establish a physical data base is shape a ERD, the Entity Relationship Diagram.

Prerequisites

- Work type: Peer
- Means of aid: only teaching materials, no use of ai.
- Timeframe: 10 Minutes
- Expected result: A Word/PDF file with an ERD that visualises the given business case.

Task

Create an ERD to the given ERM in the Crow's Foot Notation.

- Identify additional attributes
- Establish relation with inkl. the primary keys and foreign keys
- Connect the tables and finish your work by fixing the entities (0:1, :1, 0:n)

Given Details

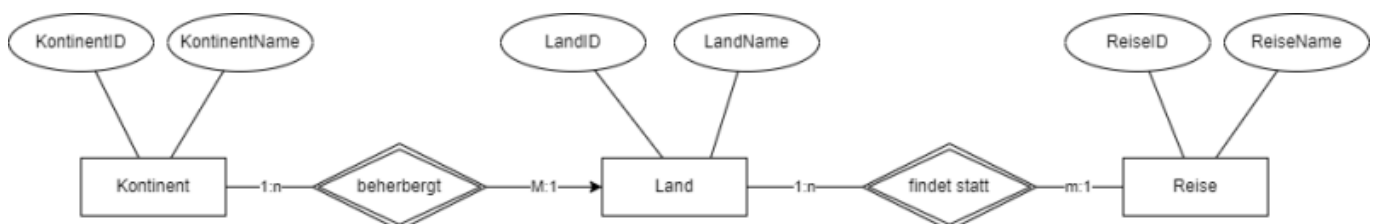
1. Relationships:

- One-to-Many:
 - A Continent can have many Countries.
 - A Country can have many Trips.

2. ERM in Crow's feet notation

- Continent (1) ————< has >——— (∞) Country
- Country (1) ————< hosts >——— (∞) Trip

3. ERM visualisation



Vocabulary

| English | German |
|--------------|-------------------------|
| prerequisite | Grundvoraussetzung |
| given | gegebene, vorausgesetzt |



Volkan Demir

From:
<https://wiki.bzz.ch/> - **BZZ - Modulwiki**

Permanent link:
https://wiki.bzz.ch/modul/m290/learningunits/lu03/aufgaben/a07_erd?rev=1724677588

Last update: **2024/08/26 15:06**

