

LU03.A04 - ERD: Travel DB

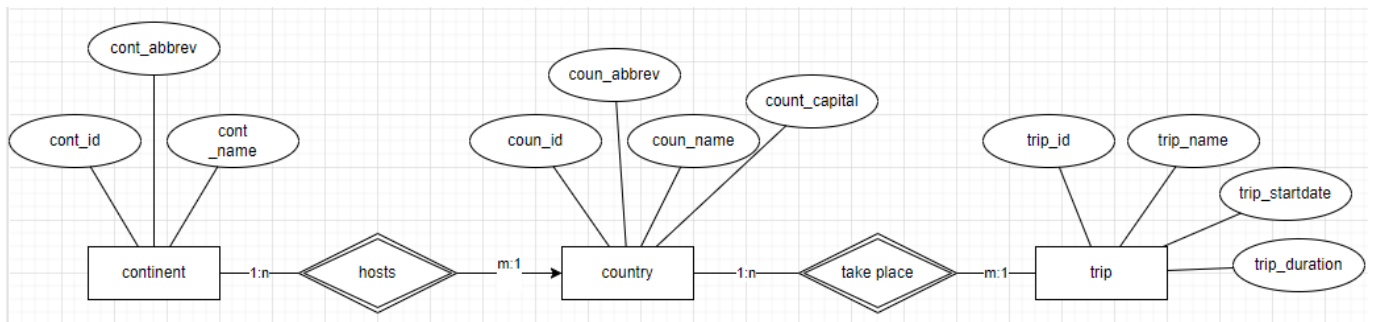
After developing our conceptual data model, the next step to establish a physical data base is shape a ERD, the Entity Relationship Diagram.

Prerequisites

- Work type: Peer
- Means of aid: only teaching materials, no use of ai.
- Timeframe: 10 Minutes
- Expected result: A Word/PDF file with an ERD that visualises the given business case.

LU03.A04 - ERD: Travel DB

Below figure of a conceptual datamodel illustrates the basic database structure of a Travel_DB. It consists of three base tables and two relations.



Task

Your assignment is to analyze the given ERD (conceptual datamodel), which is in fact the last step before creating the actual db ins our Mysql database system, and draw the ERD as a logical data model. The subtasks are:

1. develop the logical datamodel (tables, attributes, data types, fk/pk) by using the Crow's Foot Notation
2. realize the relation as relation tables (id, fk_tab1, fk_tab2, ...)
3. finalize the ERM by adding the cardinalities (1:1, 1:many, ...)

Vocabulary

English	German
prerequisite	Grundvoraussetzung
given	gegebene, vorausgesetzt



Volkan Demir

From:

<https://wiki.bzz.ch/> - **BZZ - Modulwiki**

Permanent link:

https://wiki.bzz.ch/modul/m290/learningunits/lu03/aufgaben/a07_erd?rev=1724755733

Last update: **2024/08/27 12:48**

