

LU03.S02 - ERM: Travel DB

For this scenario, the following entity(-types) are identified:

1. Country

- Attributes
 - CountryID (Primary Key)
 - CountryName
 - ContinentName

2. Trip

- Attributes
 - TripID (Primary Key)
 - CountryID (Foreign Key)
 - StartDate
 - EndDate
 - Price
- Relationships:
 - Country: A trip occurs in one country.
 - Duration: Calculated as the difference between EndDate and StartDate.

3. Continent

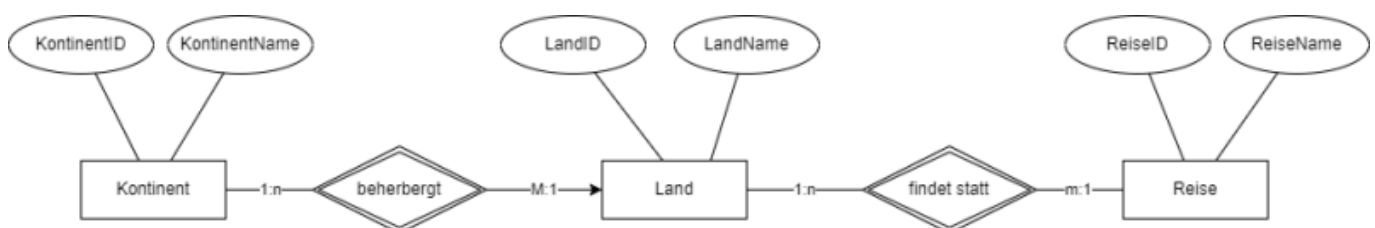
- Attributes:
 - ContinentID (Primary Key)
 - ContinentName
- Relationships:
 - Country: Each country is located on one continent.

4. Relationships:

- One-to-Many:
 - A Continent can have many Countries.
 - A Country can have many Trips.

5. ERM in Crow's feet notation

- Continent (1) ———< has >——— (∞) Country
- Country (1) ———< hosts >——— (∞) Trip



Vocabulary

English	German
prerequisite	Grundvoraussetzung
given	gegebene, vorausgesetzt



Volkan Demir

From:
<https://wiki.bzz.ch/> - **BZZ - Modulwiki**

Permanent link:
<https://wiki.bzz.ch/modul/m290/learningunits/lu03/loesungen/l02?rev=1725024426>

Last update: **2024/08/30 15:27**

