

# LU03.S02 - ERM: Travel DB

For this scenario, the following entity(-types) are identified:

## 1. Country

- Attributes
  - CountryID (Primary Key)
  - CountryName
  - ContinentName

## 2. Trip

- Attributes
  - TripID (Primary Key)
  - CountryID (Foreign Key)
  - StartDate
  - EndDate
  - Price
- Relationships:
  - Country: A trip occurs in one country.
  - Duration: Calculated as the difference between EndDate and StartDate.

## 3. Continent

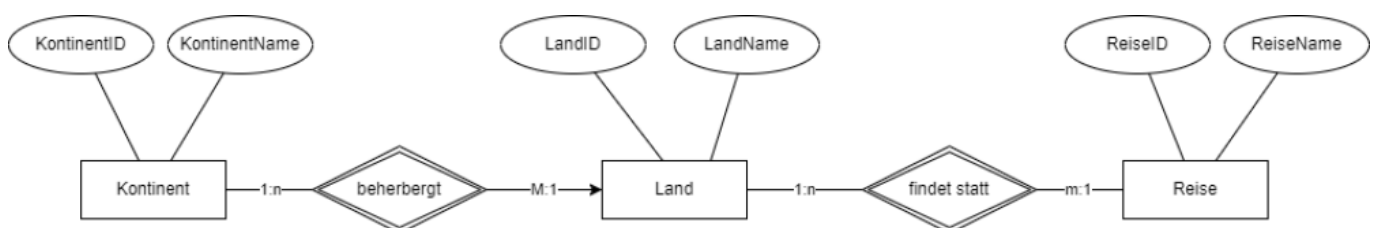
- Attributes:
  - ContinentID (Primary Key)
  - ContinentName
- Relationships:
  - Country: Each country is located on one continent.

## 4. Relationships:

- One-to-Many:
  - A Continent can have many Countries.
  - A Country can have many Trips.

## 5. ERM in Crow's feet notation

- Continent (1) ———< has >——— (∞) Country
- Country (1) ———< hosts >——— (∞) Trip



## Vocabulary

English	German
prerequisite	Grundvoraussetzung
given	gegebene, vorausgesetzt

---



Volkan Demir

From:  
<https://wiki.bzz.ch/> - **BZZ - Modulwiki**

Permanent link:  
<https://wiki.bzz.ch/modul/m290/learningunits/lu03/loesungen/l02?rev=1725952869>

Last update: **2024/09/10 09:21**

