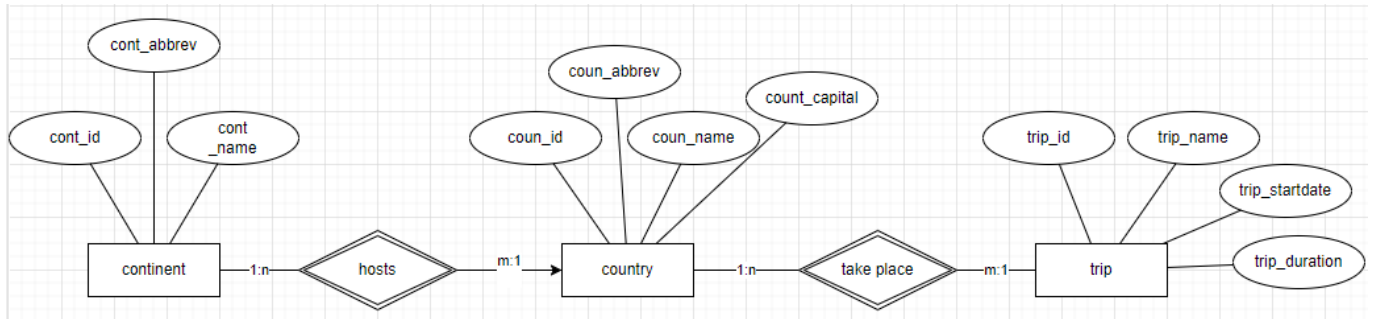


LU03.L02 - ERD: Travel DB

Below figure of a conceptual datamodel illustrates the basic database structure of a Travel_DB. It consists of three base tables and two relations.



Task

Your assignment is use the given ERD (conceptual datamodel) in order to **develop the logical datamodel**, which is in fact the last step before creating the actual db ins our Mysql database system.

Vocabulary

English	German
prerequisite	Grundvoraussetzung
given	gegebene, vorausgesetzt



Volkan Demir

From:

<https://wiki.bzz.ch/> - **BZZ - Modulwiki**

Permanent link:

<https://wiki.bzz.ch/modul/m290/learningunits/lu03/loesungen/l04?rev=1724755323>

Last update: **2024/08/27 12:42**

