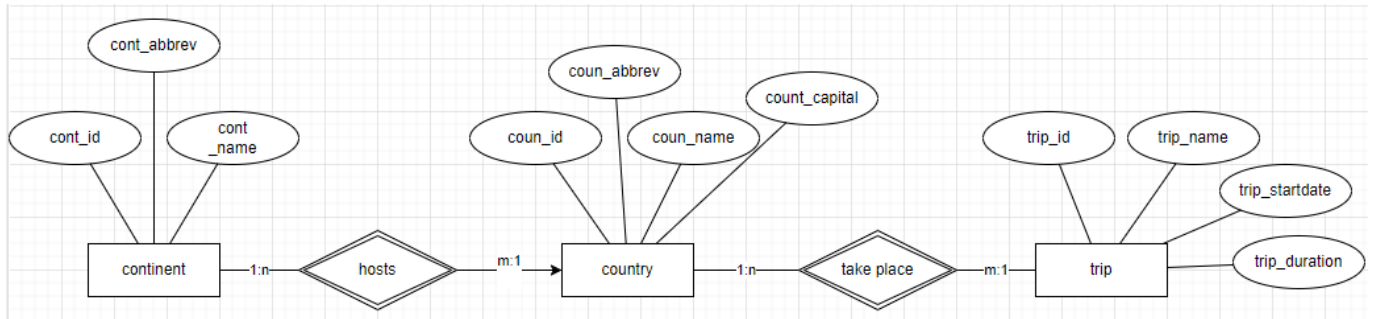


LU03.A04 - ERD: Travel DB

Below figure of a conceptual datamodel illustrates the basic database structure of a Travel_DB. It consists of three base tables and two relations.



Task

Your assignment is to analyze the given ERD (conceptual datamodel), which is in fact the last step before creating the actual db in our MySQL database system, and draw the ERD as a logical data model. The subtasks are:

1. develop the logical datamodel (tables, attributes, data types, fk/pk) by using the Crow's Foot Notation
2. realize the relation as relation tables (id, fk_tab1, fk_tab2, ...)
3. finalize the ERM by adding the cardinalities (1:1, 1:many, ...)

Vocabulary

English	German
prerequisite	Grundvoraussetzung
given	gegebene, vorausgesetzt



Volkan Demir

From:
<https://wiki.bzz.ch/> - **BZZ - Modulwiki**

Permanent link:
<https://wiki.bzz.ch/modul/m290/learningunits/lu03/loesungen/l04?rev=1724755691>

Last update: **2024/08/27 12:48**

