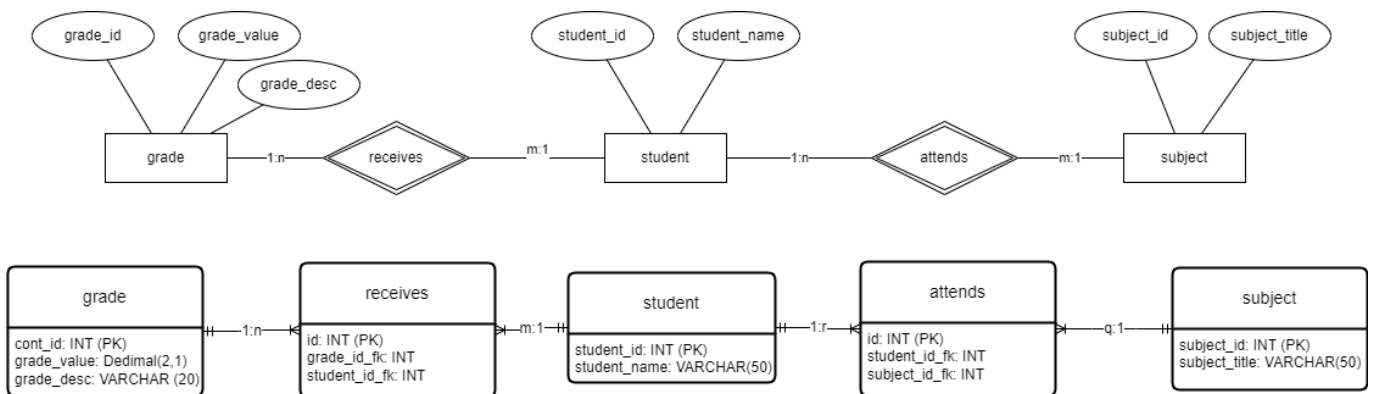


LU03.S05 - ERD: SchoolGrades_DB

- The attribut must be taken over and added with data-types and constraints (primary keys)
- The relations must be realized as relation tables, that connect the base tables
- The attributes of the relation tables are: id, and the primary key of each base table as foreign key
- Finally, the cardinalities must be added, which show how the relationships between the tables actually are.



Vocabulary

English	German
constraint	Einschränkung, Bedingung
given	gegebene, vorausgesetzt



Volkan Demir

From:

<https://wiki.bzz.ch/> - BZZ - Modulwiki

Permanent link:

<https://wiki.bzz.ch/modul/m290/learningunits/lu03/loesungen/l05?rev=1726735487>

Last update: 2024/09/19 10:44

