

LU03.S07 - ERD: Reengineering of a existing database

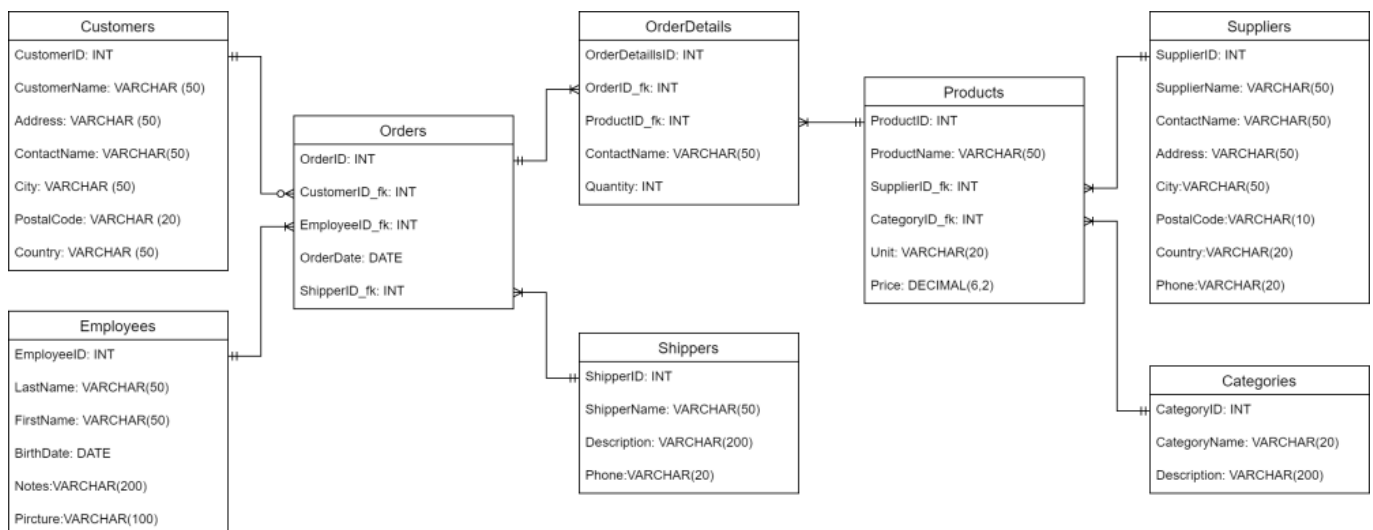
Task

Go to the W3Schools-Website, to the SQL-Editor, and analyze the existing data-structure. Create furthermore an ERD, that describes the existing data-structure in the Crow's Foot Notation.

Suggested approach

- We beginn the diagramm by identifying the entities. these are tables without any foreign keys:
 - Customers
 - Categories
 - Employees
 - Shippers
 - Suppliers
- Then we determine the attributes and the data-types of each entity (-table)
- We continue with the analysis of the relations. These are tables, which have foreign keys in their attribute list.
- Finally, we connect the tables with each other in the right fashion.

Solution



Vocabulary

English	German
prerequisite	Grundvoraussetzung
given	gegebene, vorausgesetzt

Last update: 2024/09/12 13:08 modul:m290:learningunits:lu03:loesungen:l07 <https://wiki.bzz.ch/modul/m290/learningunits/lu03/loesungen/l07?rev=1726139334>

English	German
to determine	bestimmen
suggested approach	Vorgehensvorschlag



Volkan Demir

From: <https://wiki.bzz.ch/> - **BZZ - Modulwiki**

Permanent link: <https://wiki.bzz.ch/modul/m290/learningunits/lu03/loesungen/l07?rev=1726139334>

Last update: **2024/09/12 13:08**

