

# LU03.S07 - ERD: Reengineering of a existing database

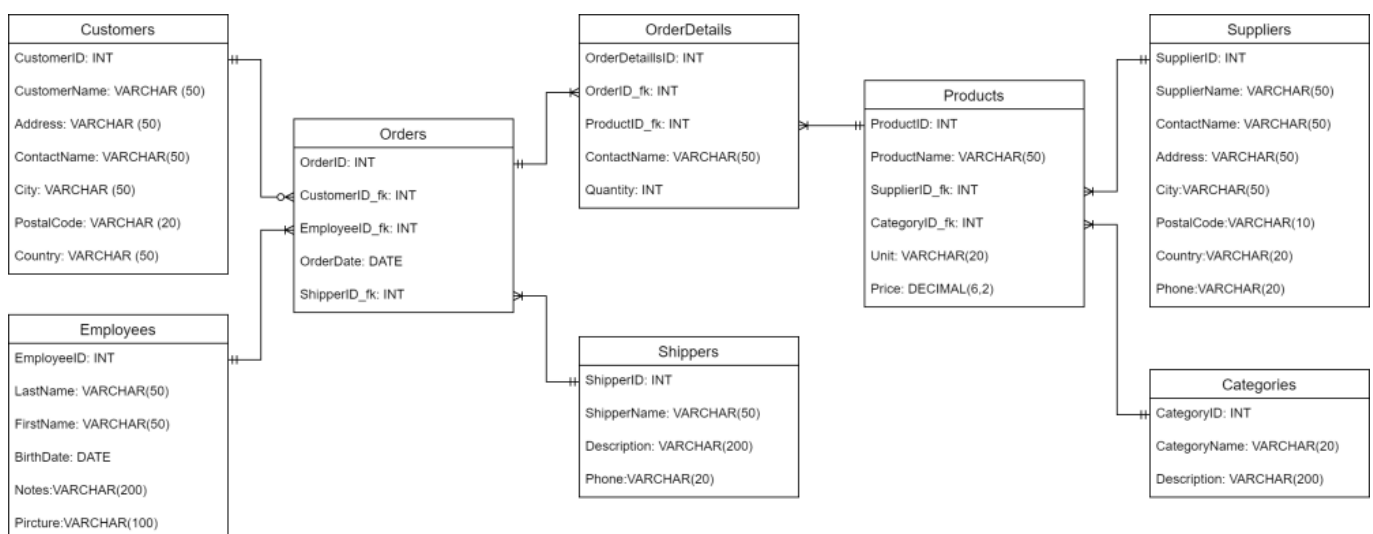
## Task

Go to the W3Schools-Website, to the SQL-Editor, and analyze the existing data-structure. Create furthermore an ERD, that describes the existing data-structure in the Crow's Foot Notation.

## Suggested approach

- We beginn the diagramm by identifying the entities. these are tables without any foreign keys:
  - Customers
  - Categories
  - Employees
  - Shippers
  - Suppliers
- Then we determine the attributes and the data-types of each entity (-table).
- We continue with the analysis of the relations. These are tables, which have foreign keys in their attribute list.
  - Orders
  - OrderDetails
  - Products
- Finally, we connect the tables with each other in the right fashion and determine the cardinalities (1:1, 1:n, n:m)

## Solution



## Vocabulary

English	German
prerequisite	Grundvoraussetzung
given	gegebene, vorausgesetzt
to determine	bestimmen
suggested approach	Vorgehensvorschlag

---



Volkan Demir

From:

<https://wiki.bzz.ch/> - **BZZ - Modulwiki**

Permanent link:

<https://wiki.bzz.ch/modul/m290/learningunits/lu03/loesungen/l07?rev=1726486865>

Last update: **2024/09/16 13:41**

