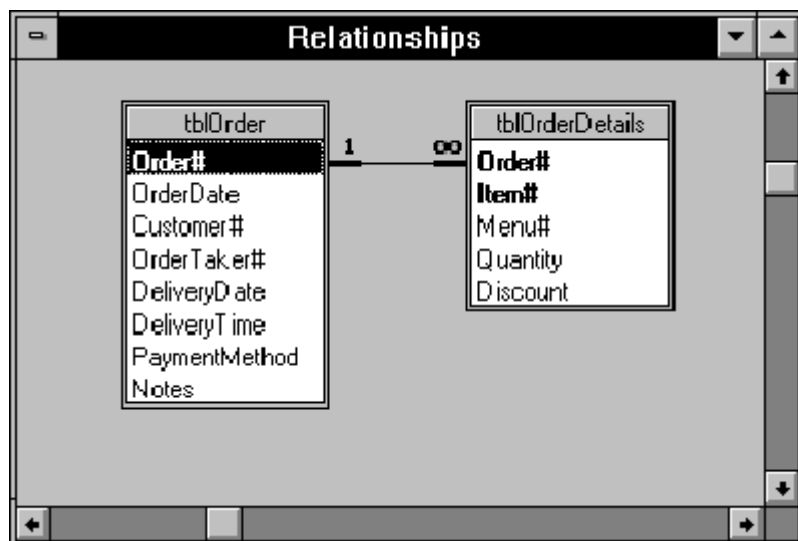


LU03a - Concept of a RDB

A Relational Database (RDB) is a structured method for storing and organizing data. The core idea is to represent data as related tables.



Key components

- **Tables:** A collection of related data organized into rows (records) and columns (fields). Each row represents a unique entity, and columns contain specific attributes.
- **Records:** A single row in a table, representing a specific instance of data.
- **Fields:** A column in a table, defining the type of data stored in each row.
- **Relationships:** Connections between tables based on shared data. Common types include one-to-one, one-to-many, and many-to-many relationships.

Vocabulary

English	German
to provide	bereitstellen

References

Definition RDB: https://de.wikipedia.org/wiki/Relationale_Datenbank

M290-LU03



Volkan Demir

From:
<https://wiki.bzz.ch/> - **BZZ - Modulwiki**

Permanent link:
https://wiki.bzz.ch/modul/m290/learningunits/lu03/theorie/a_concept?rev=1723623716

Last update: **2024/08/14 10:21**

