

LU06b - SQL-DDL: Table Management

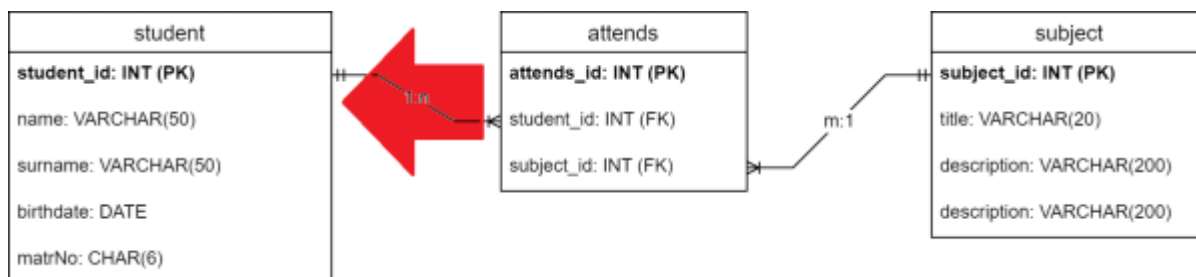
Source:

- [CREATE TABLE](#)
- [ALTER TABLE](#)
- [DROP TABLE](#)

Learning Objectives

In this learning unit, we will learn how to manage database tables, i.e. how to create, modify and delete database tables.

Let's start by creating a table based on the ERD of the student management tool, as shown below:



Our goal is to create the table „student“ on our database. For that we need to know how the basic syntax for creating table is.

```

CREATE TABLE table_name (
    column1 datatype,
    column2 datatype,
    column3 datatype,
    ....
);
  
```

In our example the our concrete CREATE statement would look like:

```

CREATE TABLE student (
    student_id INT,
    name VARCHAR(50),
    surname VARCHAR(50),
    birthdate DATE,
    matrno: CHAR(6)
);
  
```

Vocabulary

English	Deutsch
	...



Volkan Demir

From:

<https://wiki.bzz.ch/> - **BZZ - Modulwiki**

Permanent link:

<https://wiki.bzz.ch/modul/m290/learningunits/lu05/theorie/02?rev=1727267118>

Last update: **2024/09/25 14:25**

